



## Portsmouth Safeguarding Adults Board Newsletter Issue 2 April 2023

### Welcome to the PSAB newsletter!

We have had really positive feedback about the first issue of the PSAB newsletter, so we hope you like issue 2.

If you have good practice to share, or ideas for the next issue, we would love to hear from you.

In this issue:

- PSAB Annual Report
- Would you like to join our Engagement subgroup?
- Findings from the Safeguarding Peer Review
- Safeguarding in care homes
- Cost of Living
- Domestic Abuse
- Understanding homelessness in Portsmouth
- Safeguarding Vulnerable Dependent Drinkers
- New resources for professionals
- Upcoming Training
- Good news

Call us:

023 92841786

Email us:

[PSAB@portsmouthcc.gov.uk](mailto:PSAB@portsmouthcc.gov.uk)

Connect with us:

[www.portsmouthsab.uk](http://www.portsmouthsab.uk)

Twitter @PortsmouthSAB

YouTube @portsmouthSAB



# PSAB Annual Report

We recently published our annual report for 2021-22. The [full report](#) and the [one-page summary](#) are available on our website.

Highlights for the year included:

- The publication of the [4LSAB Fire Safety Framework](#) to help professionals manage fire risks within the home or residential care setting.
- Our **online [training programme](#)**
- Setting up a new **engagement subgroup**

We also published an [Easy Read version](#) of the Annual Report.

## Would you like to join our Engagement subgroup?



- Do you work with adults, carers, or community groups in Portsmouth?
- Are you passionate about keeping people safe from abuse or neglect?
- Do you want to make a difference to the people you work with and help make their voices heard?
- Would you like to learn more about safeguarding and the work of other services in Portsmouth?

The **PSAB is looking for new members for our Engagement subgroup.**

The Engagement subgroup works to:

- Communicate and raise awareness about safeguarding adults amongst people with lived experience, carers, our community.
- Gather feedback from people with lived experience, carers and our community about their experiences with safeguarding to help improve community safeguarding activity and partnership working.
- Make sure people with lived experience, carers and our community are involved in developing policies, strategies and information about safeguarding.
- Engage with our workforce around safeguarding - both in their professional role and as citizens and family members themselves.

The Engagement group meets (usually online) for 2 hours every other month.

To join the group, or for more information, contact [PSAB@portsmouthcc.gov.uk](mailto:PSAB@portsmouthcc.gov.uk) or 023 9284 1786.

## Findings from the Safeguarding Peer Review

At the end of last year, adult safeguarding in Portsmouth was reviewed by a team from the South East Association of Directors of Adult Social Services. The aim of the review was to get some constructive feedback to help improve services and how partners work together to safeguard adults at risk. Many of you contributed to focus groups or completed the survey.

The PSAB has received the final report from the peer reviewers. There were some real positives identified that we can all be proud of:

- There was a real **passion about Portsmouth** and determination to work together to make people safe.
- The PSAB was **well led** and chaired.
- Almost everyone who completed the survey was **confident that they knew how to raise a safeguarding concern**, that they could access safeguarding policies and procedures and that they had adequate safeguarding training for their role.
- Portsmouth City Council's **safeguarding decisions were robust**, and **safeguarding professionals were seen as skilled, helpful and professional**.
- **Safeguarding Enquiries were largely person centred** and inclusive of the person's wishes, views and outcomes.

They also had some suggestions for improvements - for the PSAB these included:

- **Reviewing the structure** of the PSAB, and the roles and responsibilities.
- Looking at how we **measure our impact** and how we make sure that recommendations and actions from reviews are embedded.
- **Widen the membership** of the PSAB - to include representatives from people with lived experience, carers, voluntary and business sector.

We are now working on an action plan to improve on these areas.

Thank you to everyone who contributed to the peer review.

## Safeguarding in care homes



In February, we held a workshop to investigate barriers to earlier identification of safeguarding concerns in care homes. Recently there has been an increase in large scale safeguarding

enquiries in relation to care homes in the city. We noticed that if some safeguarding concerns had been picked up earlier and escalated to the Adult MASH, patterns could have been identified and actions put in place earlier to support the homes.

A group of managers and frontline practitioners from adult social care, care home representatives, health and police came together to talk about the issues they face and why concerns are not always picked up. The main themes that we found were:

- Practitioners **focussing on a single task** and not seeing the bigger picture
- **Difficulty of bringing evidence together** from different sources and agencies
- **Fear of consequences** - including the adult or their family being reluctant to pursue concerns
- **Lack of understanding and expertise** about safeguarding concerns and quality issues
- **Lack of multi-agency approach to quality**

We also developed some recommendations and 'task and finish' groups have been formed to work on them. The work being taken forward includes:

- Training on what is safeguarding and what is quality
- Developing a better multiagency understanding of what good reviews and good care plans look like
- Support and help for care homes in the city
- Opportunities for more multiagency forums and workshops
- Piloting a single quality and safeguarding pathway.

If you are a practitioner working in or visiting care homes, you might find our new [7 minute guide to Professional Curiosity](#) useful.

You can also access [guidance on safeguarding concerns](#) on the PSAB website, and complete the [Safeguarding Concerns e-learning](#).

## Cost of Living

The cost of living crisis is still affecting all of us and there are many ways that the rising cost of living can affect people's health and wellbeing and increase the risk of abuse or neglect.

- Residents struggling to afford basic needs, including food, energy, clothing, housing
- Cold homes increase risk of condensation and mould and other health risks
- Using ways of heating the home which put people at greater fire risk
- Impact on mental health and relationships
- Higher risk activity to boost incomes, e.g. sexual exploitation, criminal exploitation, coercive relationships
- Risk of increased financial exploitation and cost of living scams

You can find out more about how to get help with housing, food, bills, debt and more at Portsmouth's [Cost of Living Hub](#). Find out more about Hampshire and IOW Fire Service's [Cost of Living Campaign](#).





## Domestic Abuse



'Eggshells' is a short film about **domestic abuse in older adults** produced by Oldham Safeguarding Adults Board. It was co-produced by a team of professional artists, partners in health and social care and a group of women who have courageously shared their lived experience for the benefit of other people.

Research concerning older survivors of domestic abuse in Oldham found that the majority of cases involve a gradual escalation of abuse as part of a long term relationship. 45% of survivors said that the abuse got more coercive and controlling over time with perpetrators monitoring and restricting their social contacts, movements, and finances. Often, due to the subtlety of coercion and control, older survivors did not recognise the behaviour as abuse until it escalated to a point where the severity of it made it difficult to leave. Equally, practitioners did not recognise these very early signs linked to coercion and control. The film was designed to help promote an understanding of these types of situations and to help everyone recognise the signs.

Please take the time to [watch the film](#) and share it with your colleagues - it is just 5 minutes long but very powerful.

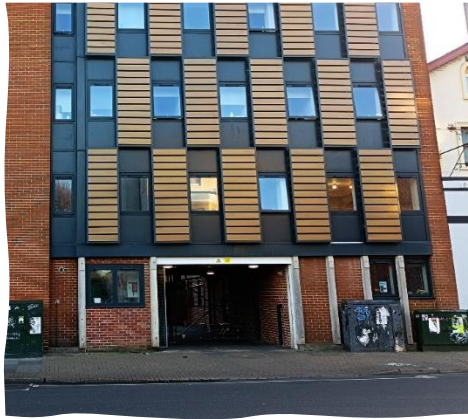
The PSAB has recently carried out a **multi-agency audit into domestic abuse**. We looked at safeguarding referrals to Adult MASH where domestic abuse was the main type of risk or part of the concern. We also carried out a staff survey to find out how confident practitioners feel in identifying domestic abuse and knowing where to refer. We are still working on analysing the results of the audit and coming up with an action plan, but some of the key findings from the survey were:

- Only 51% of practitioners were aware of the Portsmouth Domestic Abuse Referral Pathway
- Practitioners felt more confident in supporting potential victims than they did in supporting people using abusive behaviours.
- Practitioners were more confident in knowing when to refer to Children's MASH and Police, and less confident about referring to Adult MASH, Stop Domestic Abuse, and MARAC.

To find out more about domestic abuse services in Portsmouth, visit the [PSAB website](#). You can also access the latest version of the [Portsmouth domestic abuse pathway](#).

Information about the ['Responding to Domestic Abuse' training](#) provided by [Stop Domestic Abuse](#) is available on the PSAB website.

## Understanding homelessness in Portsmouth



In February and March, the Rough Sleeping Manager from Portsmouth City Council delivered some training sessions. These were in response to findings from the 'YL' and Thematic Homeless Deaths [Safeguarding Adults Reviews](#). The slides from the training are available to view [here](#), The topics covered were:

- Understanding the rough sleeping pathway in Portsmouth
- Understanding the responsibilities of Portsmouth City Council Housing and how they can help.
- Understanding the statutory responsibilities of agencies under the Duty to Refer, and what professionals from all agencies can do to help prevent homelessness
- Understanding the services available for homeless people, including the homeless navigators.

Leaflets about the [Streetlink](#) service and [Portsmouth Rough Sleeping Hub](#) are also available on our website.

## Safeguarding Vulnerable Dependent Drinkers



The charity [Alcohol Change UK](#) recently delivered some on training for us **Safeguarding Vulnerable Dependent Drinkers**. The training looked at how to make most effective use of the three main legal powers which can protect vulnerable dependent drinkers: the Care Act, the Mental Capacity Act and the Mental Health Act. The slides from the training and further information, tools, webinars and resources about safeguarding vulnerable dependent drinkers can be found [here](#).

## New resources for professionals

We have recently published a new [7 minute guide to Professional Curiosity](#).

There is also an updated [One Minute Guide to Prevent](#).

## Upcoming Training

### Information Sharing (Clare's Law and Sarah's Law)

This course will give you confidence when it comes to:

- When and how to share information with vulnerable members of the public about people in their life for safeguarding reasons without the consent of the subject.
- What the Data Protection Act says about sharing information without consent.
- Clare's Law (DVDS) and Sarah's Law (CSODS) – the Right to Ask and the Right to Know.
- Where to find guidance from the government about when and how to share this information appropriately.
- The protections that exist for you if you share such information without consent in an appropriate manner.

This course is delivered by Hampshire and IOW Constabulary. It is aimed at any front-line practitioners working with children or adults at risk, including social workers, safeguarding leads, health workers, housing staff, teachers and those working in child care.

This training is online via Microsoft Teams. There is no need to book. Please put the session in your diary and join using the Teams links below.

Thursday 4th May 09.15-10.30 [Click here to join the meeting](#)

Tuesday 4th July 12.00-13.15 [Click here to join the meeting](#)

Thursday 14th September 14.00-15.15 [Click here to join the meeting](#)

Tuesday 12th December 09.15-10.30 [Click here to join the meeting](#)

## Good news

Wendy Howard, the PSAB Administrator, received a Certificate of Congratulations from Chief Superintendent Raj Kohli at the recent Prevention, Vulnerability and Partnerships Awards Ceremony hosted by Hampshire and Isle of Wight Constabulary. This was in recognition of the support Wendy has given over the years and was well-deserved!

